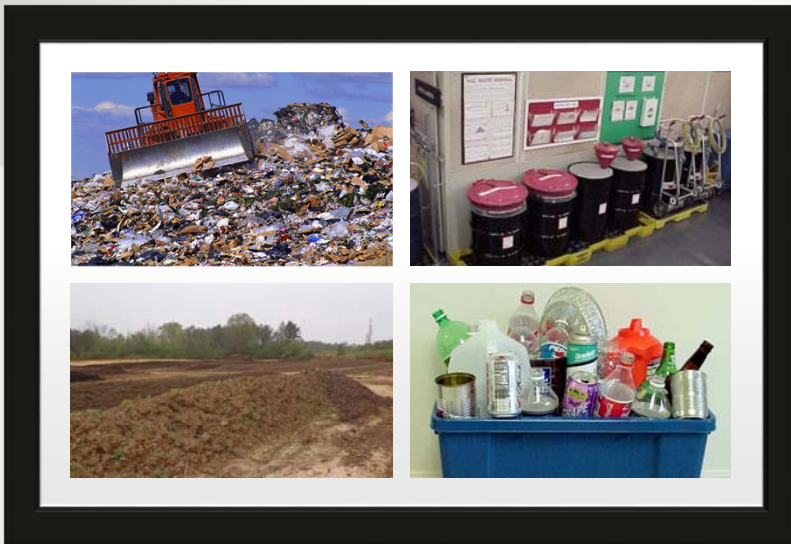


Waste Division Update

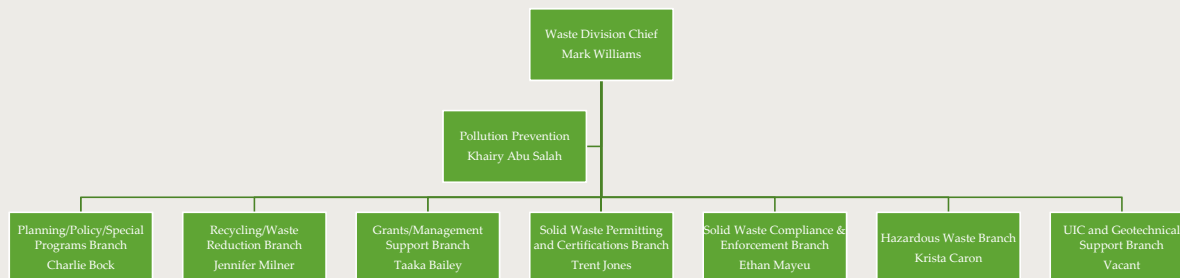
Mississippi Department of Environmental Quality

SPRING CONFERENCE
OF THE
THE MAGNOLIA CHAPTER OF THE
SOLID WASTE ASSOCIATION OF
NORTH AMERICA

BAY ST. LOUIS, MS
MAY 14-16, 2019



Waste Division



Solid Waste Permitting and Certifications Branch

Branch oversees the permitting of all solid waste facilities, review of exemption requests and lagoon closures, and certification of landfill operators and waste tire haulers

- Trent Jones – Branch Manager
- David Bridges – Permitting Engineer
- Cole Montgomery – Permitting Engineer
- Lauren Lieske – Permitting Engineer
- Deidre Graham – Certifications Program Coordinator/Waste Tire Hauler Certificates

Solid Waste Compliance and Enforcement Branch

Branch oversees the compliance and enforcement activities for all solid waste facilities in the state as well as resolution and enforcement on illegal dumping

- Ethan Mayeu – Branch Manager
- Jason Bridges – Construction Specialist/Disaster Debris Field Leader
- Eric James – Central Region Compliance Engineer
- Dawn Bodie – South Region Compliance Engineer
- Zane Surette – North Region Compliance Engineer

Solid Waste Policy, Planning and Special Programs

- **Branch oversees Local government plans, Waste Tire program, Beneficial Use, Annual Reporting, Regulation and policy development, etc).**
 - Charlie Bock– Branch Manager
 - James Eagles – Central Region Engineer
 - Ryan Case – South Region Engineer
 - Collin Selman – North Region Engineer

Geotechnical Program Branch

- **Branch manages the UIC program, Geologic/Hydrologic Issues for Solid and Hazardous Waste Programs)**
 - Jimmy Sparks, Branch Manager
 - Jonathan Williams, Geologist in Training
 - Vacant - Geologist Position

MDEQ Solid Waste Assistance Programs

- **Recycling and Waste Reduction Branch**
 - Jennifer Milner – State Recycling Coordinator – Branch Manager
 - Lynn Bradshaw – Assistant Recycling Coordinator
- **Household Medical Sharps Collection Program**
 - Bill Barnett – Program Coordinator
- **Pollution Prevention Program and enHance Environmental Stewardship Program**
 - Khairy Abu-Salah – P2 Coordinator

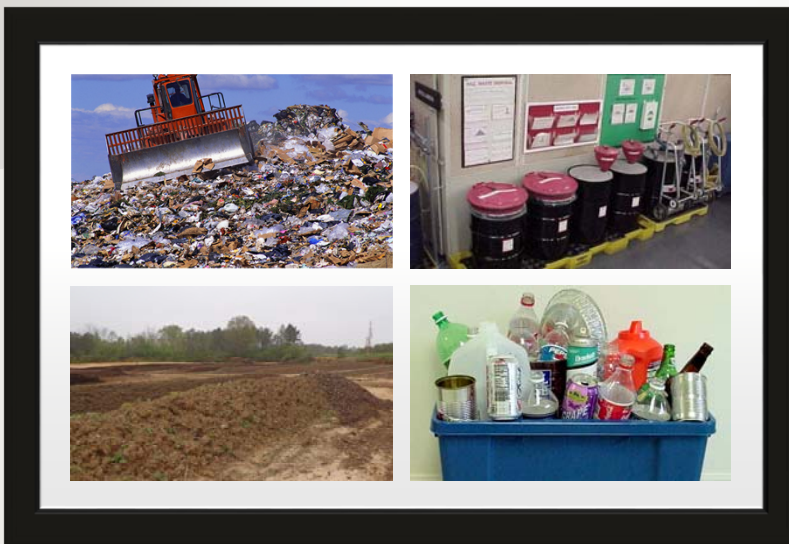
Hazardous Waste Management Branch

Branch oversees permitting, compliance, reg development for hazardous waste management in the state

- Krista Caron - Branch Manager
- Brad Justice – Compliance and Enforcement Coordinator
- David Burchfield – Program Engineer
- William Rider – Program Engineer
- Sonia Weddington – EPA ID Coordinator/Data Mgt Specialist

MDEQ Regional Office Staff

- **North Regional Office** - Director – Michael Canerdy
 - Solid Waste Inspector – David Robinson
 - Waste Tire Inspector – Kysha Harris
- **Central Regional Office** – Director – Tony Cox
 - Solid Waste Inspector – Durham Norman
 - Waste Tire Inspector - Teresa Shelton
- **South Regional Office** – Director - Barb Viskup
 - Solid Waste Inspector - Damian Elijahuo
 - Waste Tire Inspector – Chad Egan



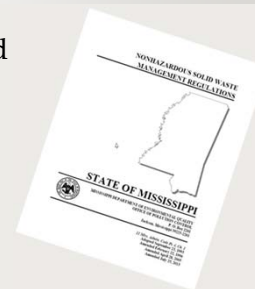
Waste Program Area Updates

2019 Mississippi Legislative Session

- HB 1657 –The General Fund appropriation for MDEQ for Fiscal Year 2020 is \$10.8 million, an increase of \$794,266 (or close to 8% increase) from the Fiscal Year 2019 appropriation. Increased insurance premiums and contributions to the state retirement system (PERS) are also included in the additional funding so this year’s appropriation has a net increase of \$400,000 over last year (about a 4% increase).
- HB 1568 –MDEQ successfully secured \$7.94 million bonding authority to access \$39.70 million in federal funds for the State Revolving Loan Fund.
- Four nominations to the Commission on Environmental Quality were confirmed by the State Senate—Dr. John Dane of Gulfport, MS, Patrick Johnson of Tunica, MS, Jamie Martin of Jackson, MS, and Billy Van Devender of Jackson, MS.

Revisions to the Mississippi Nonhazardous Solid Waste Management Regulations

- Adopted in 1993, content last updated in 2005 and incorporated into the State Administrative Procedures Act Rules in 2013.
- Sets standards for all solid waste management facilities to ensure the protection of human health and the environment.
- Appears in the State Code as: *Title 11, Part 4, Chapter 1* Mississippi Commission on Environmental Quality Regulation Regarding Nonhazardous Solid Waste Management Regulations.



Regulatory Revisions Under Consideration

- Exemption Clarifications (Wastewater, Ag wastes, slag)
- Siting Criteria (surface water, drinking water sources, property line, residences, floodplains and geologic buffers)
- Permit procedures (emergency authorizations, short term project permits, R, D & D Permits).
- Inclusion of Federal CCR Regulations
- Landfills (R,D & D, Ind LF FA, etc)
- Storage/Transfer (Closure, Leachate mgt, recycling facilities)
- Rubbish sites (Survey reqts, closure/post-closure, Fin. Assur., Deed Notation)
- Processing/Composting (New Categories and modified permit reqts)
- Land Application (short term projects, 503 parameters)

Regulatory Revision Process

- Develop and finalize draft internally.
- Hold Preliminary Stakeholder Meeting
- Adjust draft regulations based on stakeholder feedback
- Submit proposed revisions to the Small Business Review Committee for comment.
- Issue public notices and hold public hearings.
- Collect and consider all comments, make changes if deemed necessary.
- Develop and submit final revision to the Commission.
- Allow 30 day appeal period after approval.
- Hold evidentiary hearing if necessary.

Solid Waste Permitting Issues

- Statewide General Permits for Class I and Class II Rubbish Sites and for Municipal Waste Transfer Stations have been administratively continued past their expiration dates. Permitting staff expect to finalize these permit actions as the amendments to the state regulations are finalized.
- MDEQ will conduct a public comment process with public hearings on the re-issuance of these General Permits.
- Upon re-issuance all facilities covered under the GP's will be sent a notice and instructions on how to apply for re-coverage.
- MDEQ's permitting programs are now using the flexibility granted to the agency in a Legislative change in 2018 that removed mandatory public hearing requirements from air, pre-treatment and storm water permitting for municipal landfills.

Solid Waste Planning Update

- Every County and Municipality in Mississippi must have a 20-year local solid waste management plan.
- Updated Comprehensive SWM Plans completed for 39 counties and numerous municipalities (47.5% of counties);
- 4 additional counties and 1 municipality have draft plans under review with MDEQ currently (5%)
- 10 counties are in the midst of development of their updated solid waste plans (12%)
- We are having issues with planning grants made to Tunica, Coahoma, Leflore, Neshoba and Smith Counties to start development of updated long range solid waste plans.

Solid Waste Reporting

- MDEQ's Electronic Reporting Initiative For Solid Waste Facility/Activity Reporting
 - MDEQ signed a contract with Emerge Knowledge to develop the electronic reporting System through the Re-Trac Reporting Tool;
 - Annual Reporting System went active in January 2019
 - Roughly 75% of those reporting used the electronic reporting system
 - MDEQ will continue to improve the reporting tool and will continue move towards 100% participation in the electronic reporting system.

Solid Waste Facility Reporting

- 2018 reporting quantities are still being finalized. We hope that having the electronic availability of this data will help us expedite finalizing our annual report.
- 2017 Annual Facilities Reports indicates the following:
 - Total Landfilled: 5.265 million tons (up from 5.065 million tons in 2016)
 - 4.942 million tons of wastes disposed at commercial disposal sites (up from 4.631 million tons in 2016)
 - 322,135 tons* of wastes disposed at non-commercial disposal sites (down from 434,020 tons) * does not include facilities claiming conf biz info

Solid Waste Facility Reporting

- 2017 Annual Facility Reports indicated the following amounts of wastes managed at non-disposal facilities:
 - Land Application Facilities: 32,717 tons (up from 29,754 tons in 2016)
 - Composting Facilities – 25,464 tons (up from 19,569 tons in 2016)
 - Processing Facilities – 104,408 tons (up from 96,672 tons in 2016)
 - Transfer Stations – 933,955 tons (up from 881,257 tons in 2016)

Recycling Update

- **Challenges for U.S. Recycling Markets**
 - China's National Sword Standards are difficult to meet and are causing a glut in domestic markets, particularly mixed paper, and some plastics;
 - Low Natural Gas Prices are driving down recoverable plastics markets;
 - Light-weighting of containers also increases the amount of materials that need to be collected;
 - Contamination of recyclables continues to cause issues for recycling markets
 - Inconsistency in messaging is a problem for many curbside programs, etc.
 - Single Stream recycling increases participation but it also contributes to contamination by mixing materials

Recycling Update

- **The Upsides of the Current Recycling Conditions**

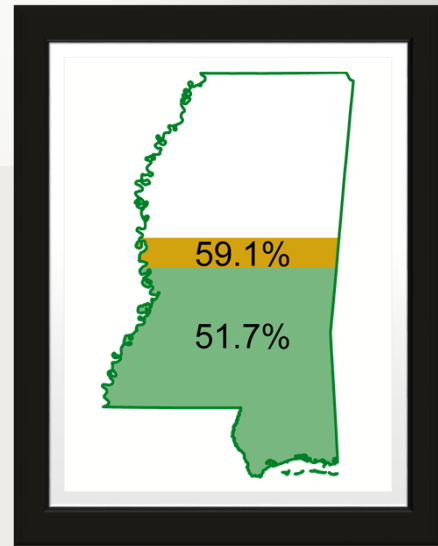
- More Corporate investment in collection, addressing contamination, public outreach and assisting with processing/sorting issues – (The Closed Loop Fund, The Recycling Partnership, Coca Cola’s World Without Waste, Glass Recycling Coalition, Carton Council, Association of Plastics Recyclers);
- Chinese investment in processing facilities the U.S.;
- Advances in alternate fuel development and energy uses for plastics that have low potential for recyclability;
- Renewed energy behind creating domestic markets and improving material quality.

Recycling Update – State Vision

- Grow recycling access for the State’s residents and businesses
 - *Emphasize Waste Reduction Strategies in Community Solid Waste Planning*
 - *Providing Grant Resources for support of recycling programs*
 - *Encourage cooperative efforts among local governments*
- Conduct and support Public Outreach Efforts Across the State
- Support and strengthen Small Recycling Businesses/Organizations
 - *Providing Support through the Mississippi Recycling Coalition*
 - *Emphasis on Partnerships with Local Governments*
- Work to develop and strengthen domestic commodity markets
- Establish appropriate reporting and measurement systems

Recycling Access

- A total of 59.1% of Mississippi's population has access to community sponsored recycling programs
 - up from 51.7% in 2013
 - Below the National average of 94% of the U.S. population having access
 - 30% curbside, 29% drop-off



Recycling Update

- Voluntary Recycling Reporting Initiative Rolled out this year through the *Emerge Knowledge Municipal Measurement Program (MMP)*.
 - MDEQ Recycling Staff is following up with local governments in the state that provide recycling to increase voluntary reporting results.
- MDEQ plans to conducting a 2nd phase of Regional Recycling Cooperative Grants as well as continued support for recycling projects through SWAG grants;
- MDEQ is working with MRC on the Annual State Recycling Conference scheduled for October 29 & 30th in Oxford, Mississippi.
- MDEQ has developed and implemented a State recycling directory of recycling programs and recycling businesses on its website;

SWAG Grants Programs – SFY 2019

Competitive SWAG Grants

- October 1, 2017 Grants Cycle - \$557,279 was awarded to the 12 local government grant applicants.
- April 1, 2018 – Grant applications from 22 local government applicants for \$786,930 under review and being ranked for possible awards;

Non-Competitive or Allocated SWAG Grants

- \$1.32 million in non-competitive, allocated SWAG grants made to county governments;
- 59 Counties have applied for their FY19 SWAG allocations which were due April 30th, with 23 counties failing to apply;
- Counties that did not apply this year include: **Attala, Bolivar, Carroll, Choctaw, Claiborne, Coahoma, Forrest, Greene, Holmes, Issaquena, Jasper, Lawrence, Leake, Lincoln, Lowndes, Monroe, Noxubee, Pearl River, Scott, Smith, Webster, Wilkinson, Winston, and Yazoo**
- RFP Documentation is continued to receive greater scrutiny. It is important for grantees to maintain and provide proper documentation for expenses.

Waste Tire Program Update

- 5 to 5.5 Million Passenger Tire Equivalents are collected and processed annually in Mississippi; (approx. 50% from out-of-state sources)
- Approximately 94% (4.53 million) of these tires were processed for recycling purposes;
- Approximately 736,000 PTE's were collected through local government waste tire collection programs and 94% of these were recycled;
- MDEQ has approximately 113 active registered haulers, 9 commercial processing/collection sites and 154 local government collection sites.

Waste Tire Program Update

- MDEQ awarded 28 counties, solid waste authorities, and a few municipalities approximately \$1.38 million in waste tire funding in Fiscal Year 2018.
- Waste tire collection and processing prices are on the increase due to a reduction in end uses of waste tire derived materials for fuel and athletic and playground uses.
- Off-road tires continue to present management problems because they cannot be fully processed for use and are incredibly bulky to transport and manage.
- Delta Energy in Natchez, Mississippi is continuing its de-polymerization activities converting tires to carbon black and industrial oils.

Electronics Management

- MDEQ continues to promote Local E-Waste Collection and Recycling Events Around the State:
 - Fall 2018 Jackson Metro Event (Nov 2, 2018) collected 15,881 pounds of e-wastes for recycling.
 - Spring 2019 Metro Event (April 26, 2019) collected over 19,000 pounds of e-wastes.
 - Continue to help fund events in conjunction with HHW Events or Collection Programs
 - Continue to provide Grant Support to JSU Computer Refurbishment Program
- MDEQ continues to maintain listings of the Certified Electronics Recyclers for State Agencies and Institutions and to Promote E-Waste Recycler Certification.

Medical Wastes - Pharmaceuticals

- U.S. DEA is administering the recently promulgated Federal “Take Back” Rule. Pharmacies are beginning to develop take-back programs for consumer pharmaceuticals and medications.
- U.S. DEA continuing to sponsor bi-annual take back events for pharmaceuticals with local law enforcement agencies.
 - **UPCOMING EVENT:** October 27, 2018
 - **RECENT EVENT:** April 27, 2019 (Close to One million pounds—nearly 475 tons collected)
 - **TOTAL EVENTS:** 9,964,714 pounds, or 4,982 tons collected since 2010.
- Miss. Department of Public Safety offers local collection points for pharmaceuticals at the State’s Driver’s License Stations.

Medical Wastes – Household Sharps

- MDEQ’s household medical sharps program update:
 - Collection program continues to grow with the addition of more retail pharmacies (adding Freds, Walgreens, etc).
 - Program currently has grown to 381 collection sites across the state.
 - Program is collecting approximately 1 million sharps annually
 - Seeking to add sites in communities without traditional pharmacy collection points (now a solid waste plan component). We will consider alternative facilities such as fire stations, police stations, local health departments, etc.

Food Waste Update

- Federal Government released a interagency Food Waste Strategy in April 2019
 - Enhance Interagency Coordination – EPA, USDA and the FDA
 - Increase Consumer Education and Outreach Efforts
 - Improve Coordination and Guidance on Food Loss and Waste Measurement
 - Clarify and Communicate Information on Food Safety, Food Date Labels, and Food Donations
 - Collaborate with Private Industry to Reduce Food Loss and Waste Across the Supply Chain
 - Encourage Food Waste Reduction by Federal Agencies in their Respective Facilities

Biosolids Update

- EPA made tremendous cutbacks in Federal oversight of biosolids programs, so states are primarily taking the lead in these oversight efforts;
- MDEQ authorizes land application of biosolids as follows:
 - a statewide general permit or individual permit for class B biosolids;
 - a beneficial use determination for class A or exceptional quality biosolids under the Beneficial Use program.
- MDEQ also reviews and approves lagoon closures through the solid waste program permitting branch;
- MDEQ is evaluating a regulatory change that will allow for a streamlined permit process for short duration land application projects.

Industrial Wastes

- Noncommercial Industrial Landfills and Disposal Sites
 - Disposed of 317,499 tons of solid wastes for disposal in 2017
- Beneficial Use Program 2017 Numbers :
 - 81 Beneficial Use Determinations have been issued by MDEQ for uses of various material types in the state;
 - 50 BUD Holders reported activity in 2017
 - Preliminary reporting figures for 2017 indicate that 811,581 tons (down from 1.055 millions tons in 2016) of wastes were beneficially used in Mississippi
 - 711K tons were used in construction uses/99k tons in soil amendment uses

Industrial Wastes – Coal Combustion Residuals

- EPA's CCR Rule went into effect October 19, 2015 enforced through citizen lawsuits;
- CCR Rule - Phase 1, Part 1 Amendments were effective August 29, 2018.
- CCR Rule - Phase 1, Part 2 Amendments may be finalized in the summer of 2019.
- MDEQ is planning to adopt the CCR rule by reference into the Nonhazardous Waste Regulations and will likely make amendments to the State Beneficial Use Regulations as the final amendments are adopted.

Oil and Gas Wastes

- EPA conducted an assessment and review of the way that Oil and Gas Wastes are regulated. EPA has found that it is not necessary to revise the existing federal solid waste regulations for the management of wastes associated with the exploration, development and production of crude oil, natural gas and geothermal energy
- Mississippi Commission on Environmental Quality approved the State Oil and Gas Board on Regulation of NORM Wastes (Rule 68) in February 2017.
- One condition of the approval was that the updates would be made to the other primary disposal rules (Rule 45). Land Spreading for drilling muds, drill cuttings and other nonhazardous drilling materials;

Disaster Debris Management - Federal

- EPA Office of Resource Conservation and Recovery released the final document - Planning for Natural Disaster Debris & Related Guidance Documents on April 24, 2019. The document includes:
 - Recommended components of a debris management plan,
 - Suggested management options for various natural disaster debris streams,
 - A collection of case studies that highlights how several communities prepared for and managed debris generated by recent natural disasters,
 - Resources to consult in planning for natural disasters, and
 - EPA's recommended pre-incident planning process to help prepare communities for effective disaster debris management.

Disaster Debris Management - State

- MDEQ released a revised “Disaster Debris Management Guidance” for 2019 events that is posted on our website;
- MDEQ has approved a number of debris management sites this Spring in response to several storm events. Debris management sites have been approved for Columbus (1 site), Neshoba Co/Philadelphia (2 sites); Rankin County (2 sites) and Scott County (1 site); Anticipating additional sites from affected counties.
- MDEQ has with individual counties on the development of pre-incident disaster debris management plans for FEMA. Disaster debris management plans are also required as part of the local solid waste management plan;
- Mississippi Marine Debris Emergency Response Guide – Developed and Released By NOAA and available on MDEQ Solid Waste Home Page and is in the process of being updated.

Hazardous Waste Program Update

- Mississippi’s State Hazardous Waste Program Re-Authorization Package was approved April 3, 2019 for all rules that MDEQ had adopted through 2016;
- Federal E-manifest system for hazardous wastes was launched in Mississippi and nationwide on June 30, 2018.
- Hazardous Waste Generator Improvements Rule – Took effect in June 2018
 - Allowing a hazardous waste generator to avoid increased burden of a higher generator status when generating episodic waste provided the episodic waste is properly managed and
 - Allowing a VSQG (formerly CESQG) to send its hazardous waste to a large quantity generator under control of the same person.

Hazardous Waste Program Update

- EPA Proposed Rule: Include Aerosol Cans in the Universal Waste Rule (EPA accepting comment on the proposed Rule through May 15, 2018).
- EPA has proposed a Rule on Modernizing Hazardous Waste Regulations for Ignitable Liquids Determinations. Comments must be received on or before June 3, 2019.

Hazardous Waste Program Update

- MDEQ's Hazardous Waste Regulatory Plans for 2019 include the likely adoption of the following:
 - **Definition of Solid Waste (DSW)** Rule from 2015 updated in 2018
 - **EPA User Fee Rule** from January 2018 (Related to E-Manifest system implementation)
 - **Safe Management of Recalled Airbags** from November 2018 –
 - **Management Standards for Hazardous Waste Pharmaceuticals and Amendment to the P075 Listing for Nicotine** – Adopted by EPA - February 2019

UIC Program Update

- MDEQ permitted its first commercial nonhazardous waste class I UIC well in Amite County in early 2018 to Injection Disposal Services for a blended industrial waste containing MSW landfill leachate and oil and gas exploration wastes.
- UIC program is transitioning its class V well database to a new management system under the direction of EPA and Mississippi will be one of the test states for the new system.

Mississippi Pollution Prevention Program

- Currently works with our contractor, the Mississippi Manufacturing Association's Manufacturing Extension Partnership to implement the State's Pollution Prevention Programs;
- enHance Environmental Stewardship Program recently recognized membership approvals into enHance for 2019 for 1 new member (Siemens Manufacturing) and 9 renewing members at Annual Workshop and Awards Luncheon on April 8th.
- MDEQ P2 Program has a Hazardous Waste/Hazardous Materials workshop planned for the late summer. The announcement will be forthcoming in the immediate future.

For more information:

Mark Williams, P.E., BCEE, Chief - Waste Division

Mississippi Dept of Environmental Quality

P.O. Box 2261

Jackson, Mississippi 39225-2261

Email: mwilliams@mdeq.ms.gov

Phone: 601-961-5171/Fax: 601-961-5785

www.mdeq.ms.gov