



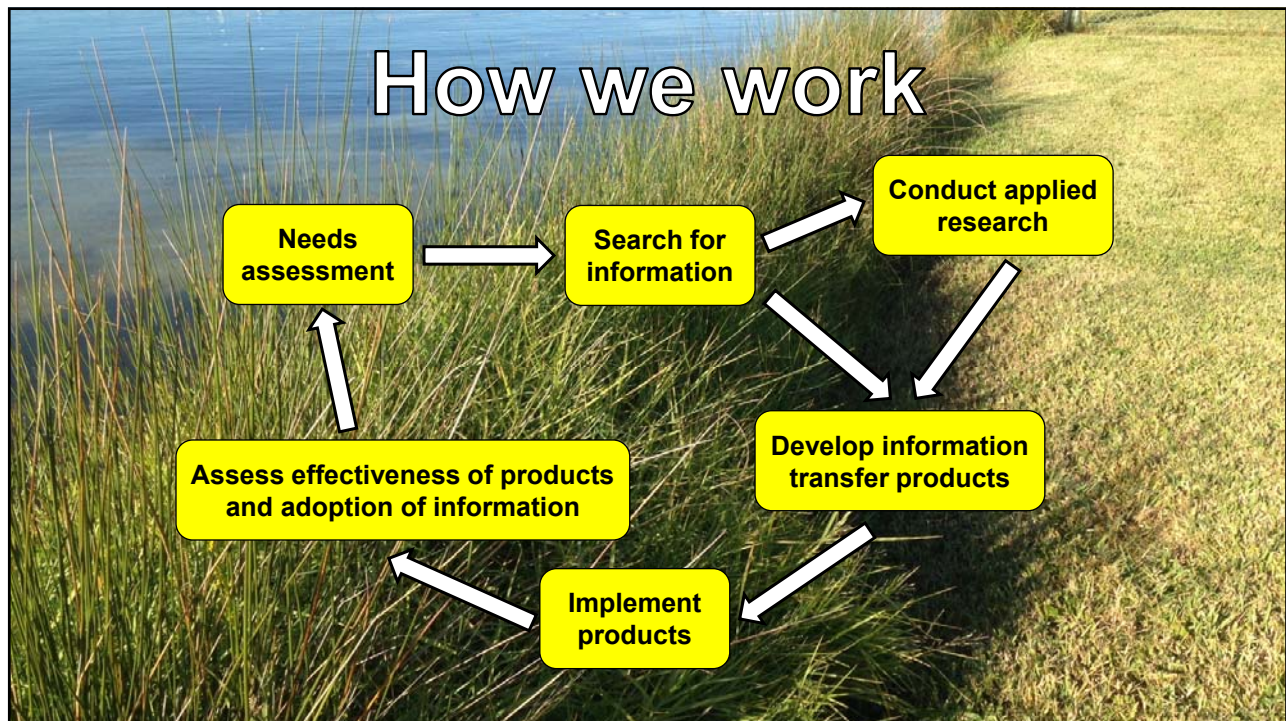
Addressing litter through Extension



Eric Sparks
eric.sparks@msstate.edu



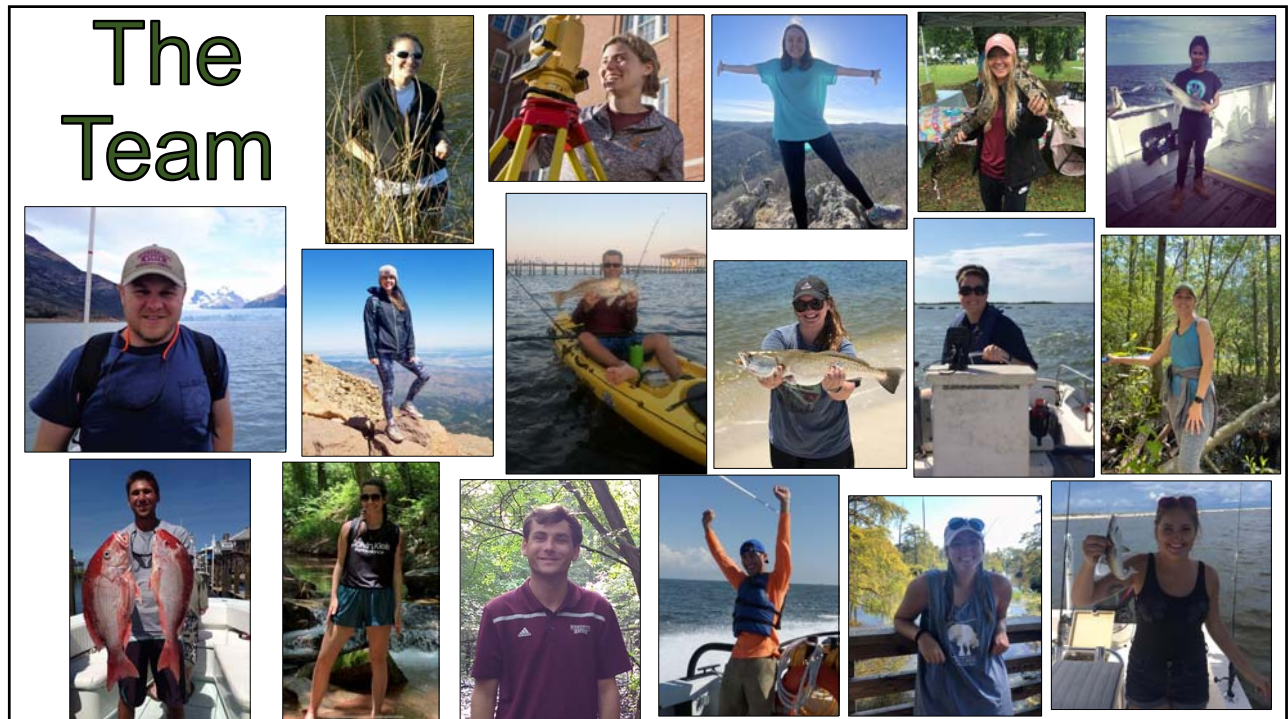
1



2




3




4

IMPACTS OF MARINE DEBRIS




INGESTION

Animals mistakenly eat plastic and other debris.




ENTANGLEMENT & GHOSTFISHING

Marine life gets caught and killed in ghost nets, trapped in derelict gear, and entangled in plastic bands and other marine debris.




HABITAT DAMAGE

Heavy marine debris crushes sensitive habitat, such as coral reefs and sea grass.

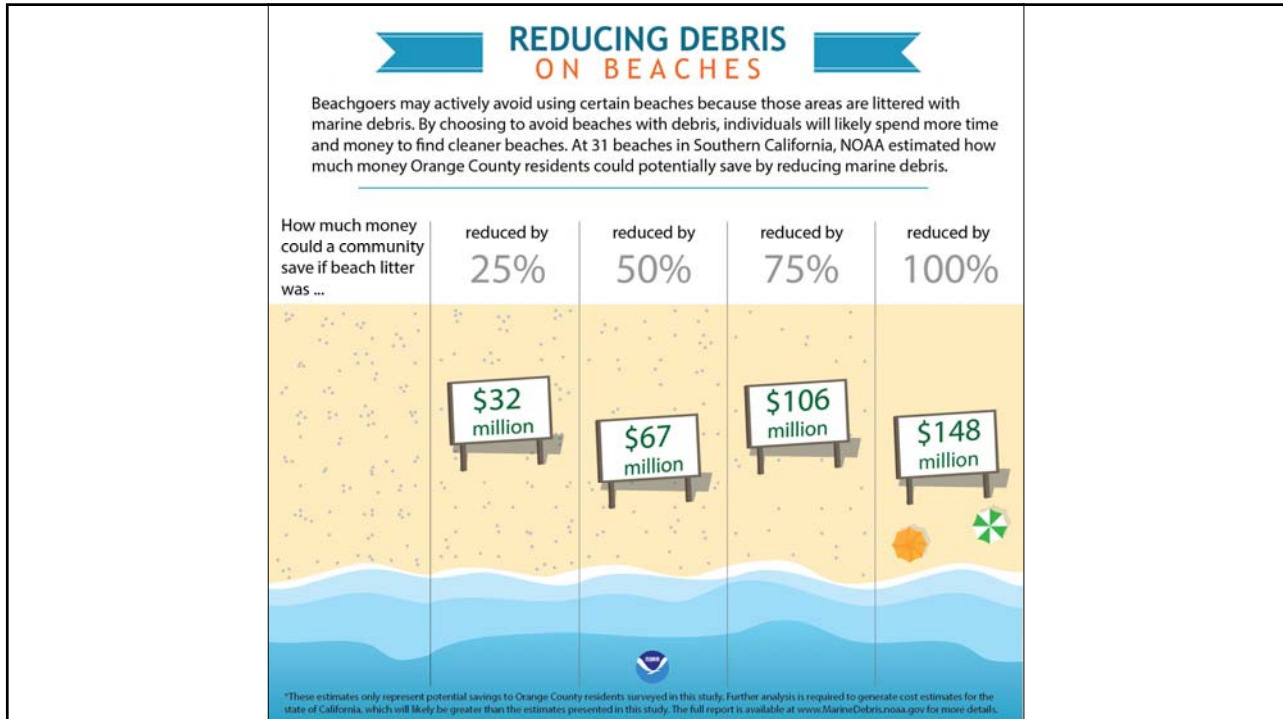


NON-NATIVE SPECIES

Marine debris transports alien and invasive species from one region to another.

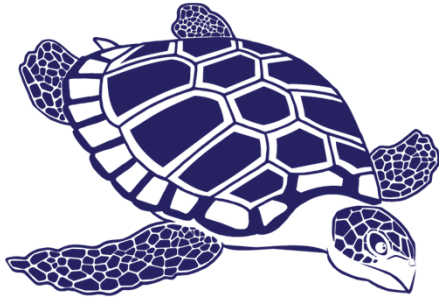


5



6

How it all started.....



Mississippi Coastal Cleanup

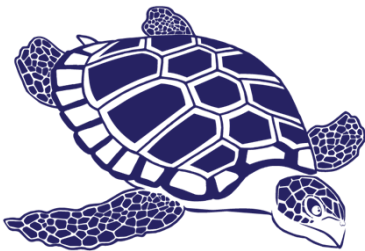
7

The collage features the 'Mississippi Coastal Cleanup' logo (a stylized turtle) and the text 'Mississippi Coastal Cleanup' in the top left. A map of the Gulf of Mexico coastline is in the top right, with red and blue circles indicating cleanup locations. Three arrows point from the logo to the map and two photos below. The bottom left photo shows two people on a beach with an orange bucket. The bottom middle photo shows a pile of collected debris like plastic bottles and sticks. The bottom right photo shows a large group of people, including children, posing on a beach with their arms raised.

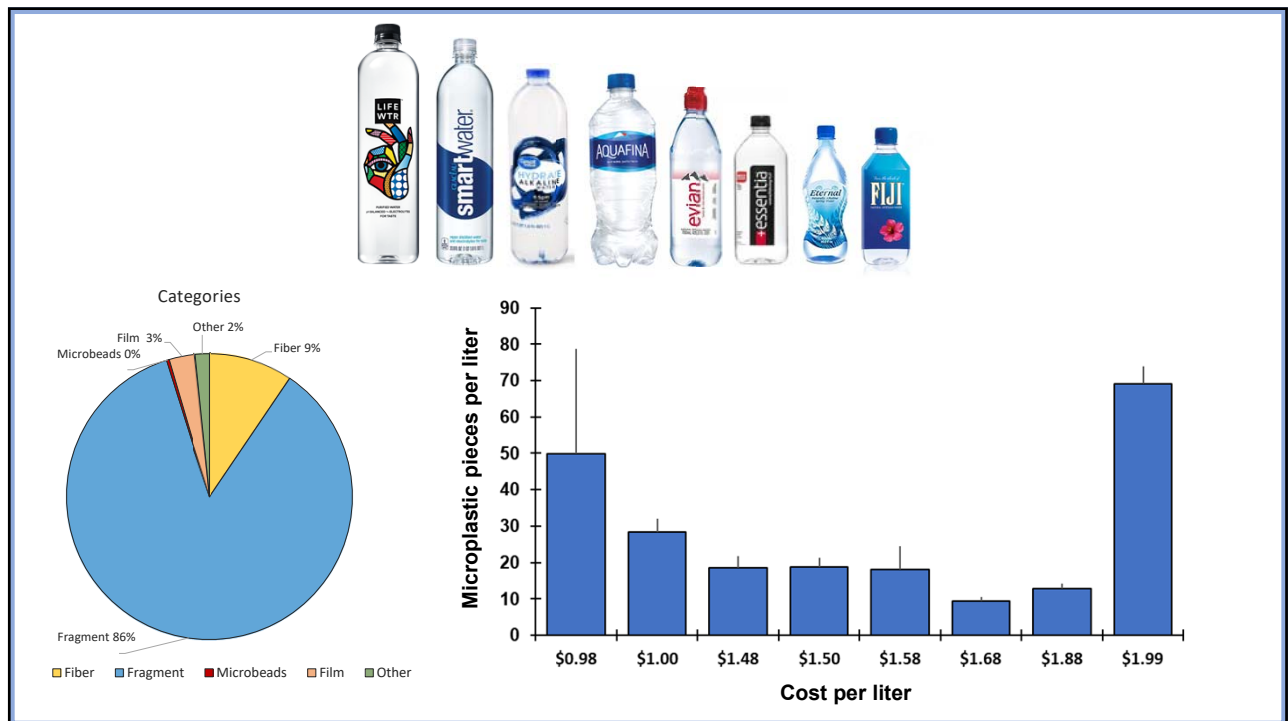
8

Program impacts

- Single event to > 15 per year
- ≈ 2,000 volunteers per year
- ≈ 15 tons removed per year
- ≈ 5,000 educated per year
- Applied research to fuel outreach



9



10



11



12

The Shrimping Industry



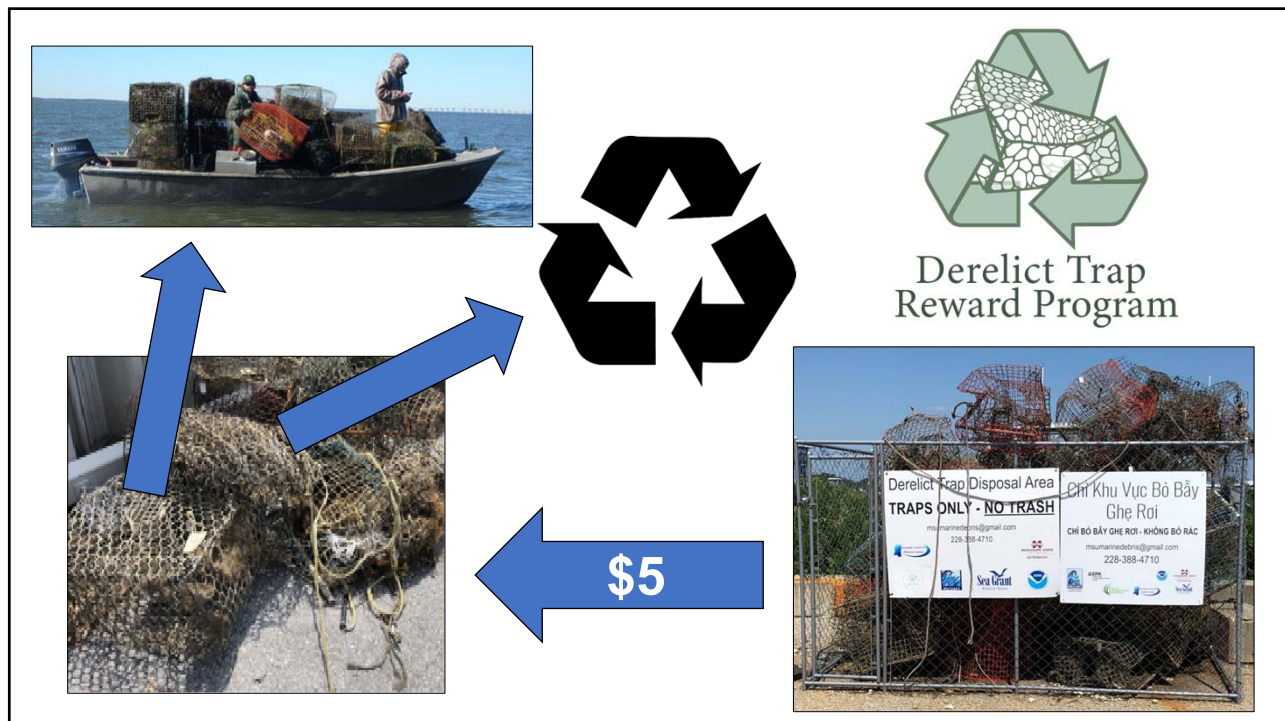
13



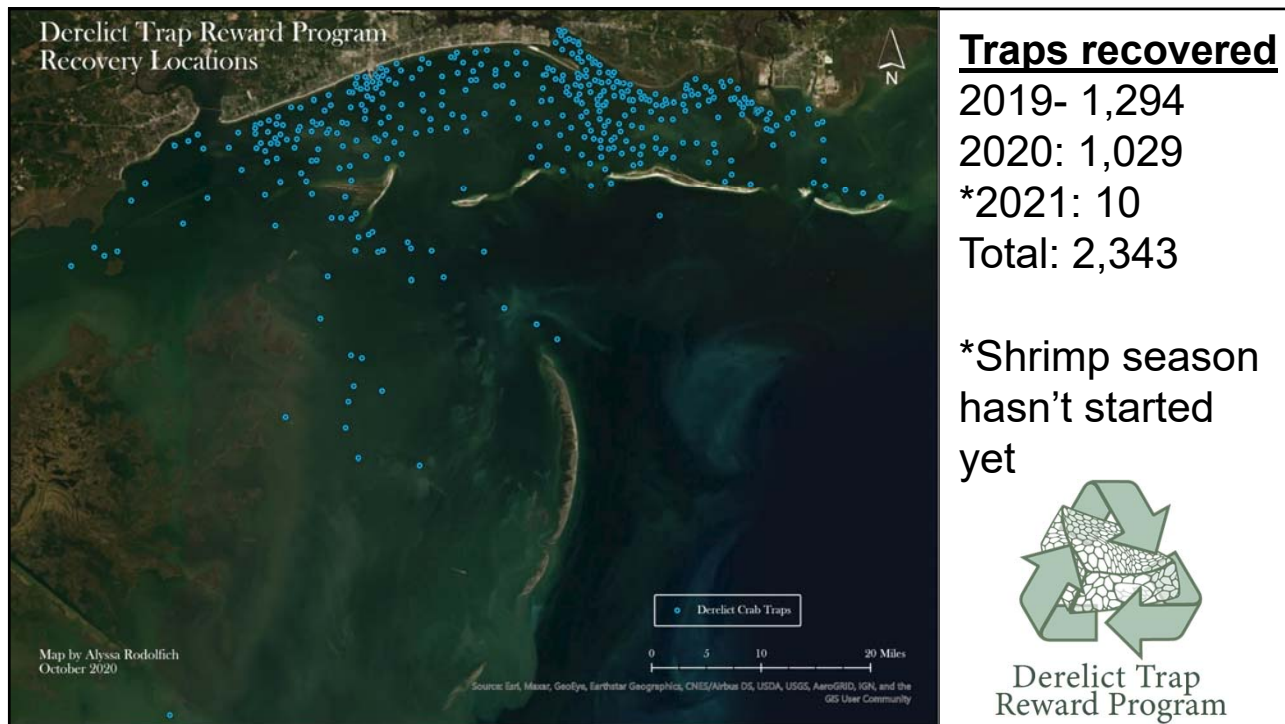
14



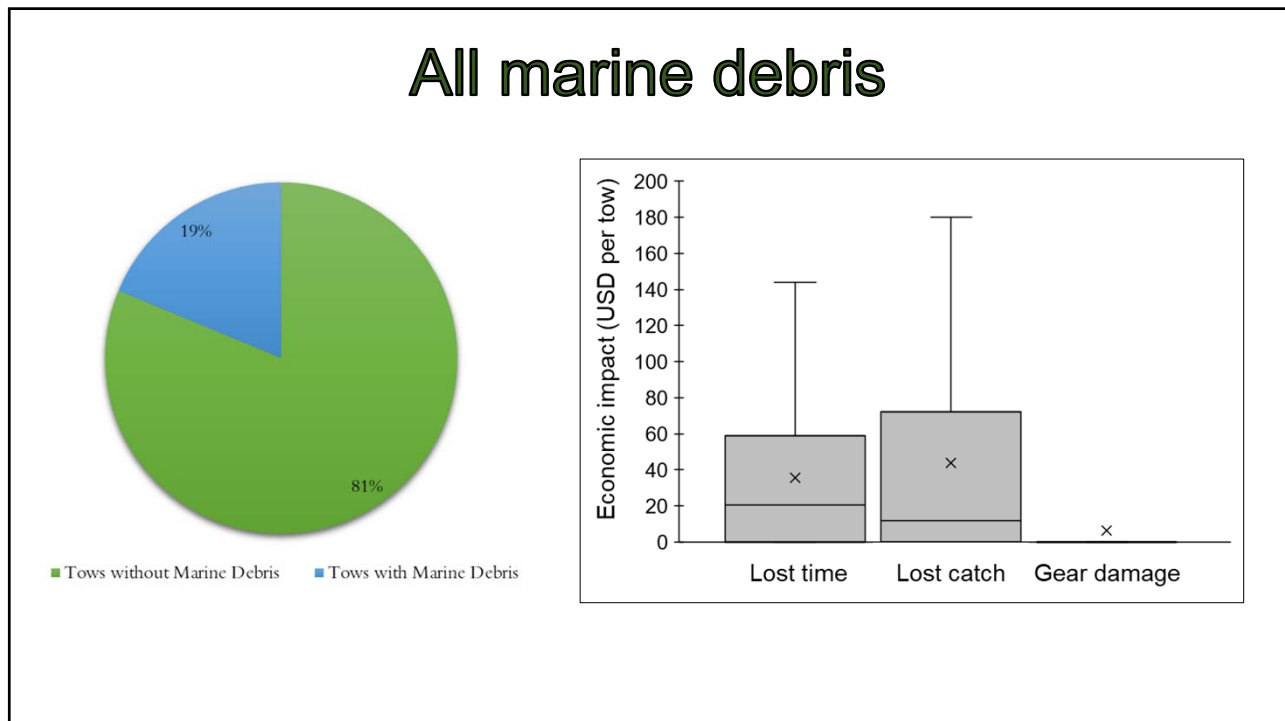
15



16



17



18



\$ impact now
 \$7,702 per year
 X
 120 shrimpers
 =
\$924,240

\$ impact future
 \$30,340 per year
 X
 120 shrimpers
 =
\$3,640,800

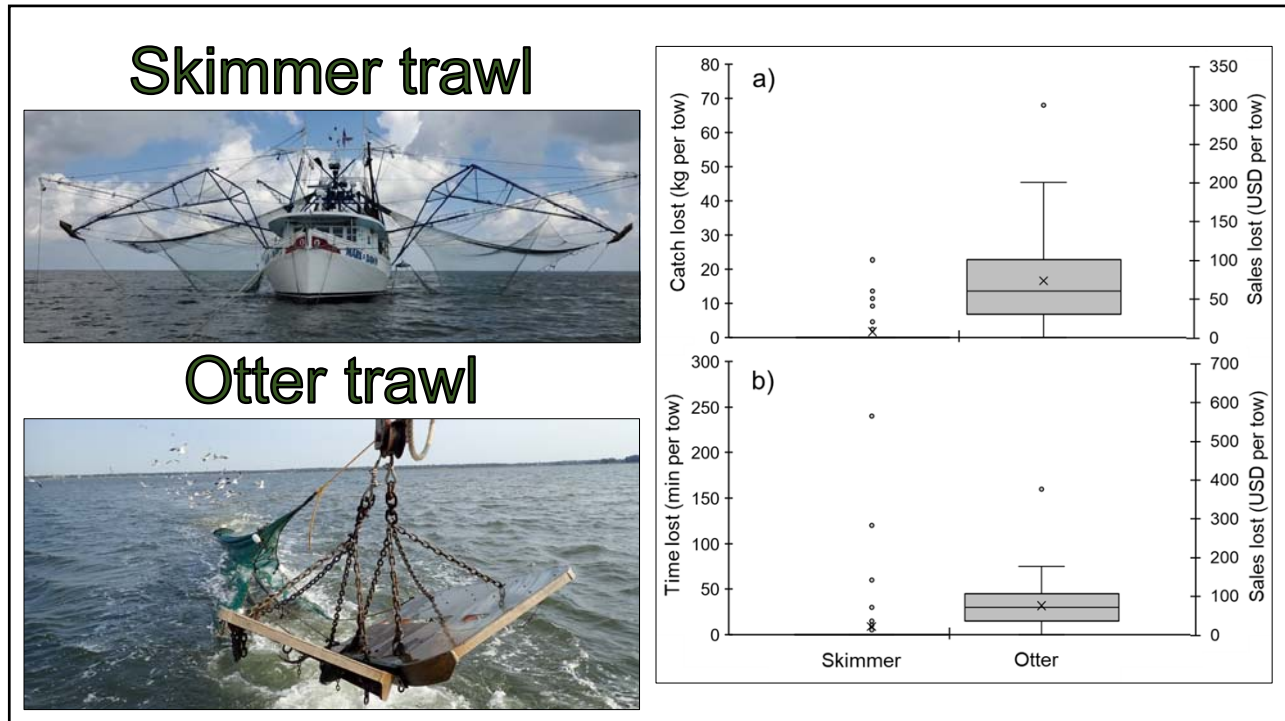
19



\$ impact now
 \$7,702 per year
 X
 120 shrimpers
 =
\$924,240

\$ impact future
 \$30,340 per year
 X
 120 shrimpers
 =
\$3,640,800

20




21



22


Sea Grant in the Gulf of Mexico

HOME REGIONAL SEA GRANT PROGRAMS OIL SPILL SCIENCE EMERGING COASTAL CHALLENGES CLIMATE AND RESILIENCE COP FISHERIES & AQUACULTURE



Litter Prevention and Removal Resources

Mississippi Resources



Alabama Resources

Nolittermovement.com

23



COASTAL CONSERVATION & RESTORATION

Questions?
 Email: eric.sparks@msstate.edu
 Visit: coastal.msstate.edu/ccr

24