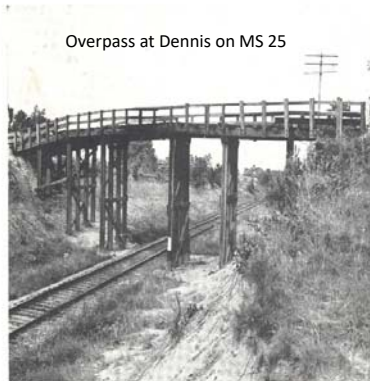




Mississippi's Transportation System

1

- A territorial law for opening & regulating highways was enacted April 12, 1799.
- Public ferries were established along the mighty river and other waterways with a toll by the time MS became a state in 1817.
- By June, 1822, Boards of Police were in charge of road building.
- By April 1841, a \$500 fine was imposed for damaging any public bridge.



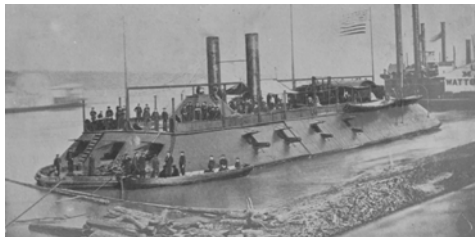
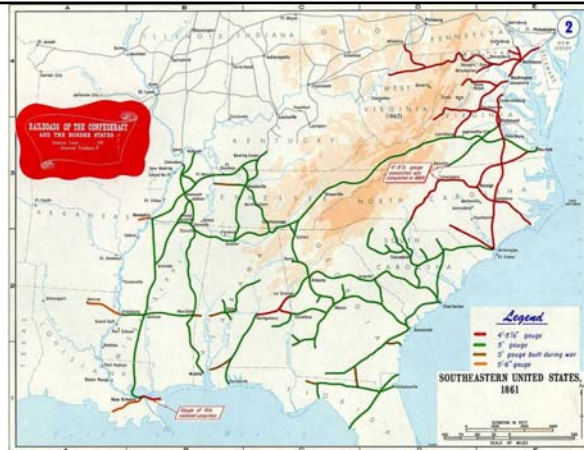
2

- The first rules of the road were enacted in 1856.



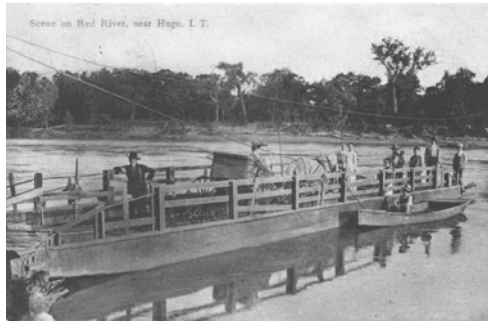
3

- The Civil War 1861 - 1865



4

- The Road Tax Law was enacted in 1880, placing an assessment of \$3 annually on men between the ages of 18 – 60.
- The latter part of 1890, all roads and ferries were placed under the jurisdiction of County Board of Supervisors & by 1900 there were 20 vehicles in the state.



Mid-1800's

5



6



7

- In 1910 graded & drained earth roads and graveled surface roads began to be constructed.
- In 1915, Mississippi received it's first concrete road located between Tupelo and Verona, 5 miles long, 9 feet wide

A VIEW OF THE FIRST CONCRETE ROAD SOUTH OF OHIO RIVER—U. S. 45 IN LEE COUNTY, MISSISSIPPI

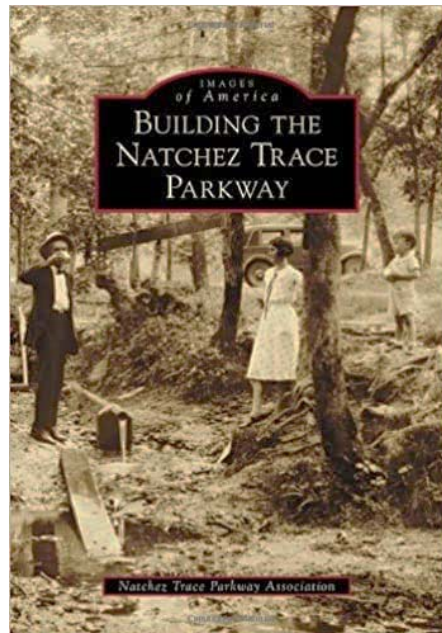


8

- The MS Highway Commission was created March 29, 1916, under Governor Theo G. Bilbo, consisting of three members, with their first commission meeting in April of that year.
- The Federal Aid Act of 1916 which provided funds to be matched by the states for highway construction.
- First gas tax collected in 1922 of 1 cent per gallon
- Between 1924 – 1930, the infrastructure for MS highways was born, under the Stansel Act.
- Circa 1930, the first Chief Engineer was hired and the organization was being called the State Highway Commission or MS Highway Department.
- The gas tax had skyrocketed by 1931 to 6 cents a gallon.

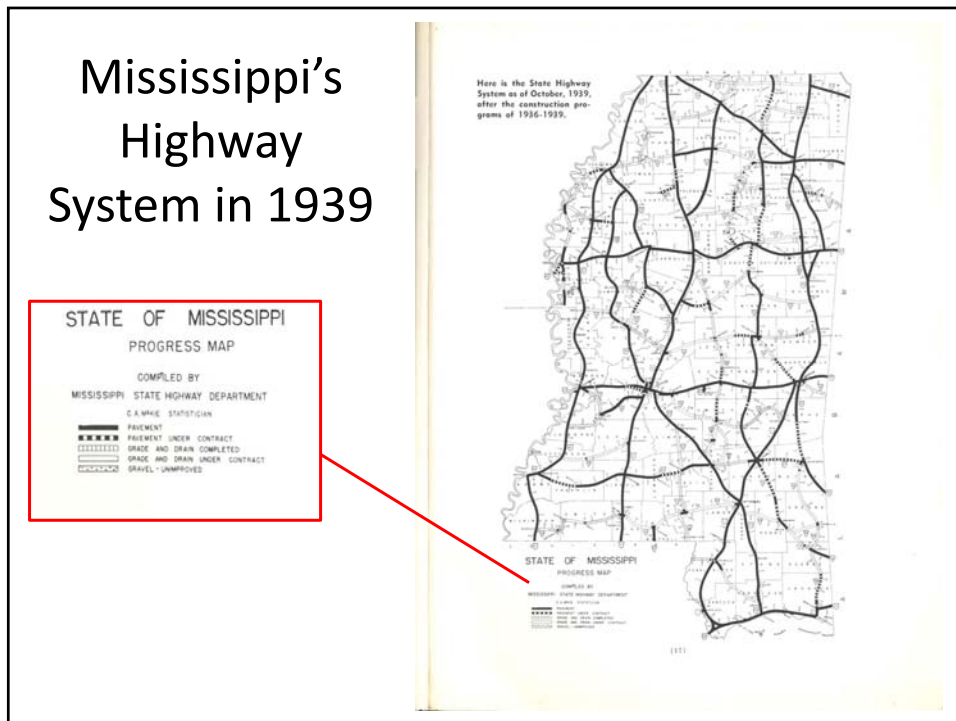
9

- By 1940, \$5.9 million had been obligated between 3 states for the construction of the Natchez Trace Parkway.



10

Mississippi's Highway System in 1939



11

- The 1944 Highway Act was signed into law and then in In 1956, life was given to the state's interstate system. 1962 saw the birth of Interstates 55, 20, 59, 220 and 10.
- 1969 Hurricane Camille
- 1972 marked the election of Governor William L. Waller and significant investments in infrastructure.
- In 1981, shifting highway investment priorities from construction to maintenance of existing roads, and in 1987, the four-lane highway program came along with most of the work being conducted in phases.
- July 1992, the State Highway Commission and Highway Department were reorganized into the Mississippi Department of Transportation (MDOT) which is governed by the Mississippi Transportation Commission.

12

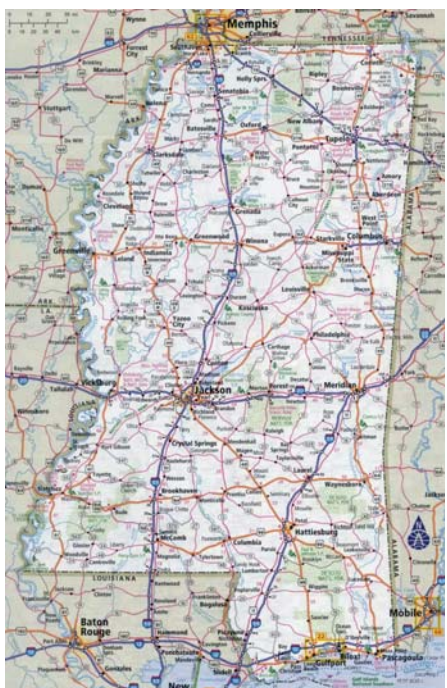


Mississippi's intermodal transportation infrastructure as it is today




This slide features a map of Mississippi on the left, showing a dense network of roads, highways, and rail lines connecting major cities like Memphis, Jackson, and Mobile. To the right of the map is a photograph of a single white magnolia flower with a yellow center, set against green leaves.

13



Mississippi's intermodal transportation infrastructure as it is today



This slide is identical to the one above, featuring a map of Mississippi's transportation infrastructure on the left and a photograph of a white magnolia flower on the right.

14

- 2005's Hurricane Katrina crippled the state's Gulf Coast.



15



16



17



18



Education

19



Trash Bash

20



21



22




23



24

 <p>Michelle Williams District 1 - Tupelo</p>	 <p>Courtney Collins-Goode District 2 - Batesville</p>	 <p>Wanda Woodards District 3 – Yazoo City</p>
 <p>Lorrie Redden Jackson Administration</p>	 <p>Jessica Warrington District 6 - Hattiesburg</p>	 <p>Daphne Scott District 7 - McComb</p>

25

<p>I WON'T BE REMEMBERED AS A WOMAN WHO KEPT HER MOUTH SHUT.</p> <p>NOT SORRY, The End</p>	 <p>Connie McMullan District 5 - Newton</p>
--	---

26